



THE BRITISH COLLEGE
OF BRAZIL
A NORD ANGLIA EDUCATION SCHOOL

Keeping Our Community *Safe*

An Overview of BCB's Current Protocols - January 2022



Latest updates

Close Contacts

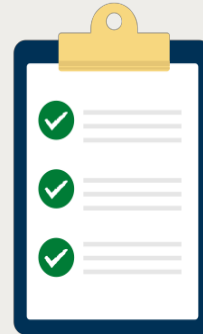
- We want to minimise absence from school and reduce online learning so following latest guidance we are no longer bubbling classes. We will be using close contact tracing to discover any contact with confirmed positive cases.
- Social distancing is also removed but we are still being cautious in classrooms.
- A close contact is anyone who spends more than 15 minutes within 1.5metres of a confirmed positive case, they will be asked to quarantine.
- This usually means anyone sitting at the same table during lessons would be a close contact. Our staff are aware of who sits where at all times and in all lessons.
- We use screens at lunch time in the dining hall so we should not get any close contacts during this time.



Latest updates

Quarantine times

- We want to minimise absence from school and reduce online learning so following latest guidance we have reduced our quarantine periods.
- Anyone with a positive test will be quarantined for 7 or 10 days. If they have a negative test on day 7, they can return to school. If not, they must quarantine for 10 days.
- Anyone who is a close contact will be quarantined for 7 or 10 days. If they have a negative test on day 7, they can return to school. If not, they must quarantine for 10 days.
- There are no exceptions to quarantine, even if someone has recently had COVID-19.
- Please help us by keeping your child at home if they are exhibiting any symptoms of flu or COVID.



Ongoing protocols



Health and Safety



Screen – anyone entering either campus will be subject to health checks



Clean - regular disinfecting and deep cleaning of areas in, during, and after use



Dispose – proper disposal of PPE and used cleaning supplies



Hygiene – regular handwashing and availability of hygiene supplies



Distance – social distancing has now been removed, along with bubbles

Health and Safety Procedures

Screen

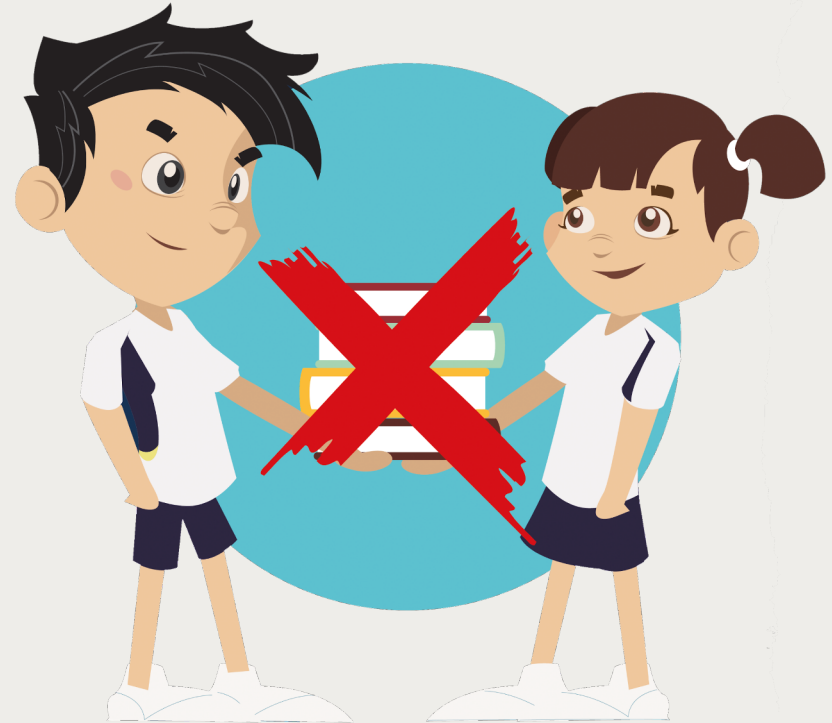
- Community education on self monitoring of possible COVID-19 symptoms
- Staff, students, and parents be on alert for any symptoms of COVID-19 and will be required to stay home if not feeling well
- Health/temperature screenings will be conducted daily for all staff, students, and visitors
- Any person exhibiting symptoms of COVID-19 on campus will immediately be brought to an isolation area and the family contacted to collect the child
- Support for students who are in quarantine or who have been excluded from campus due to screening
- Recommendations to our pupils, staff and families to self assess in the mornings prior to arrival and contact your healthcare provider for guidance



Health and Safety Procedures

Clean

- Community education on scheduled cleaning during school day
- Minimise use of shared supplies
- Adherence to recommendations for proper cleaning and enhanced sanitation procedures of our campuses
- Disinfection protocols for high use areas scheduled through the school day and each evening



Health and Safety Procedures

Dispose

- Community education on proper PPE usage and disposal



- Signage throughout campus on PPE usage and disposal



Health and Safety Procedures

Hygiene

- Community education on correct personal hygiene, (handwashing, coughing and sneezing properly)
- CDC approved signage throughout campus on handwashing
- Increased availability of supplies to support healthy hygiene guidance
- Additional sanitizer stations added throughout campus and at all doorways around campus



Health and Safety Procedures

Hygiene



- Visitors are required to wear face coverings while on campus
- Community education on proper usage and cleaning of face coverings
- All staff and students will be required to wear a face covering while on campus



Primary Procedures



- Cars arriving will be the usual drop off, parents to stay in cars and TA's will open car doors and escort children into school
- Children arriving on foot will enter through the main reception area/front desk
- All children will be screened on entry, if a concern is raised the child will be kept in safe isolation area and parents contacted to return to school immediately to collect
- Full school uniform must be worn each day, PE kit on PE days
- Children should bring a water bottle to be filled at the water station. Water fountains are not used for personal drinking.



Secondary Procedures

Pupils will use the Secondary entrance/exit (Rua Doutor Ferreira Lopes).

Secondary entrance/exit will also be used for pupils using buses.

Rua Doutor Ferreira Lopes
Secondary entrance/exit



Main school entrance

Rua Álvares de Azevedo

If siblings are in both Primary and Secondary then main school entrance to be used (Rua Álvares de Azevedo).





The British College of Brazil, *transforming the lives of our students*

