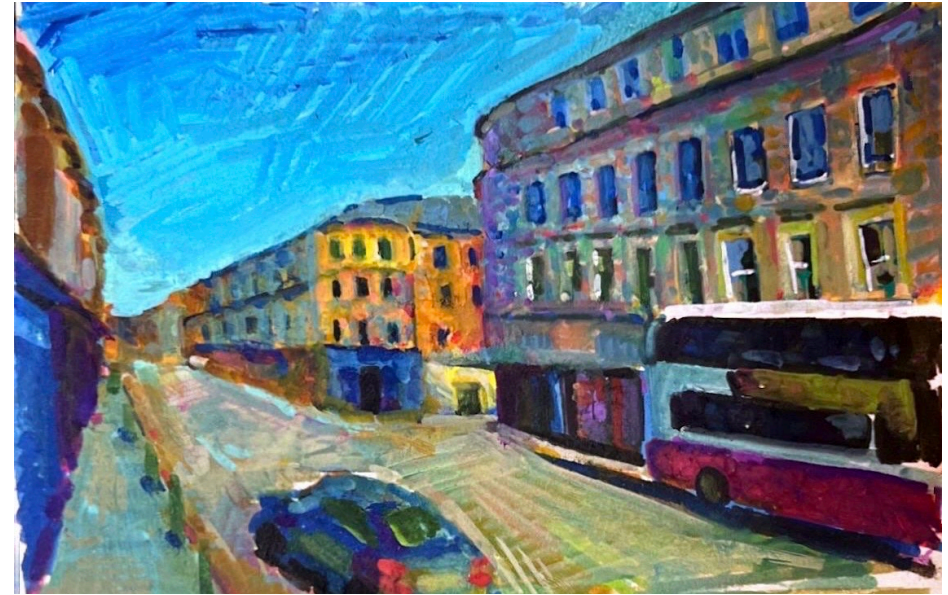
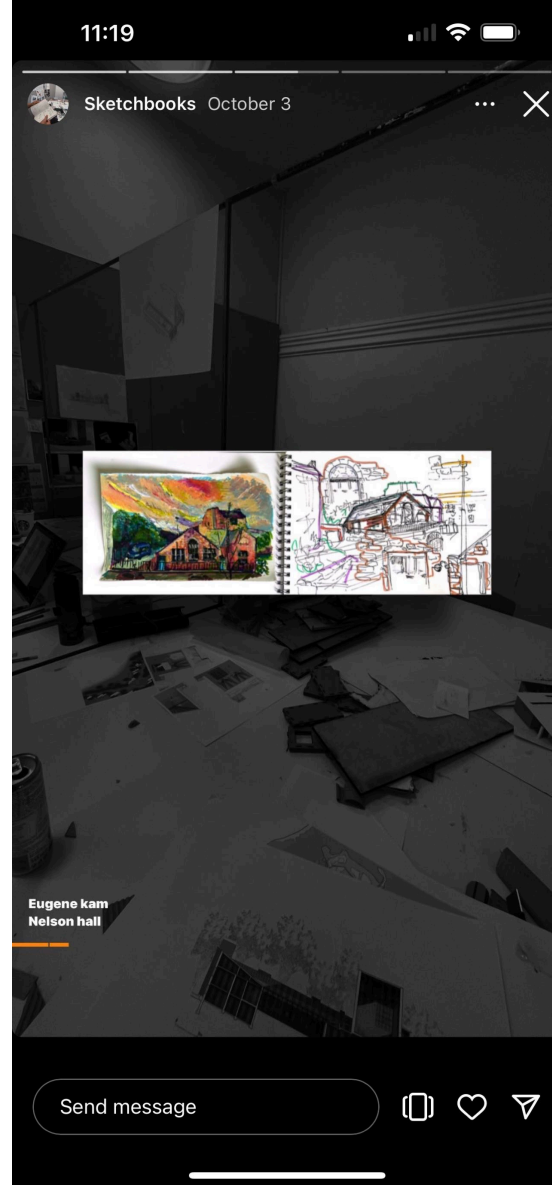
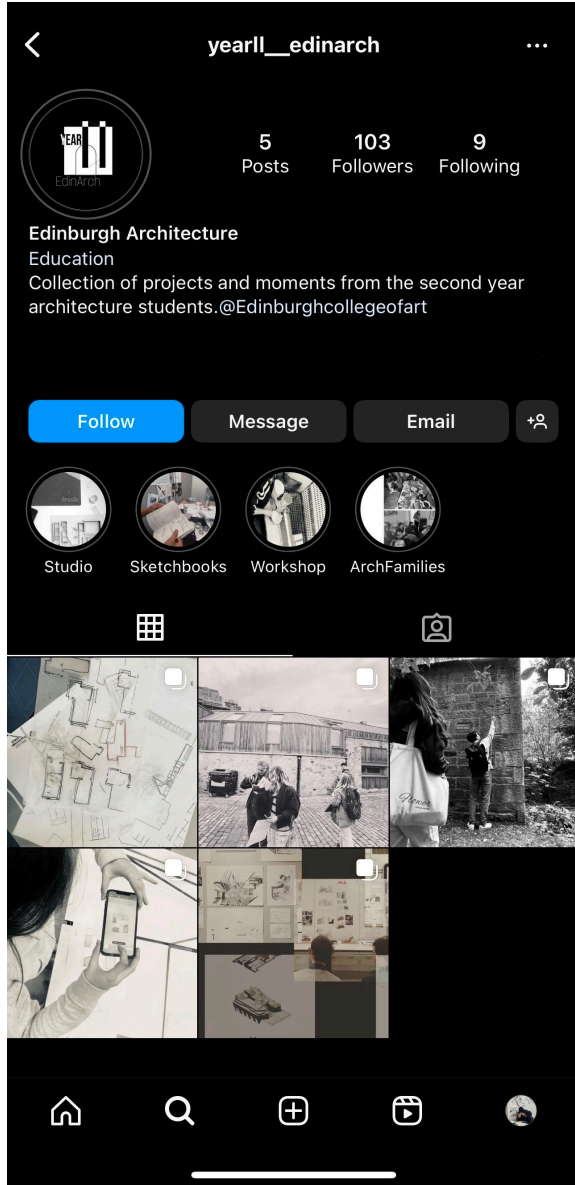
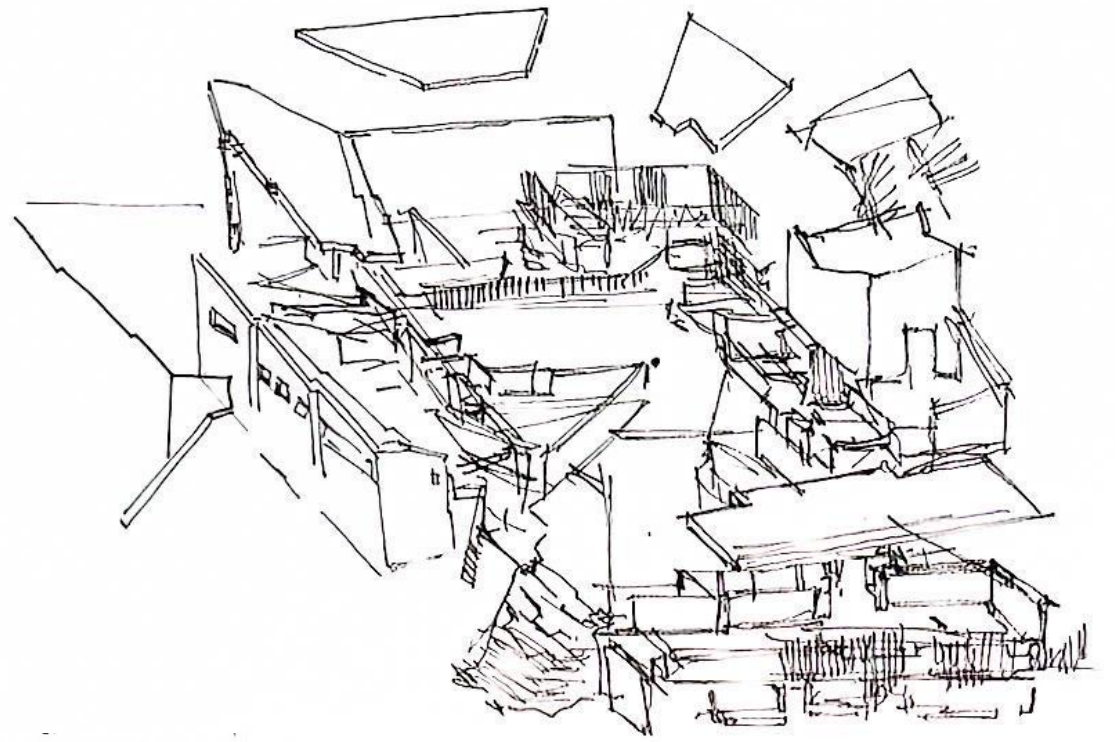
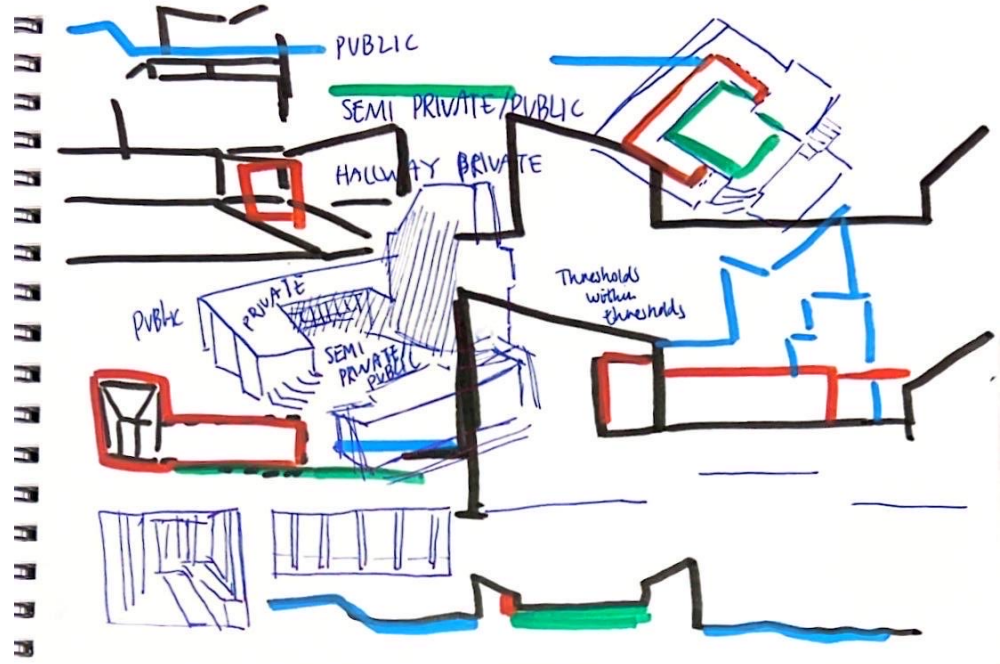


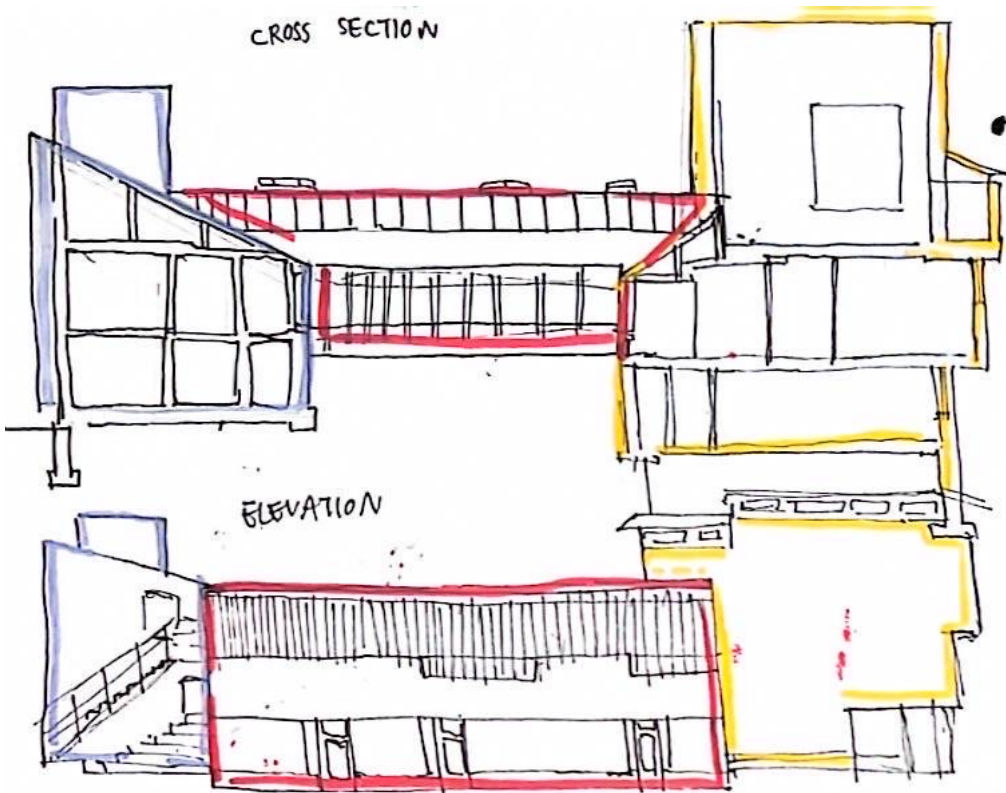
Eugenes work features on the university Instagram account



Sketchbook work: Design Thinking



CROSS SECTION

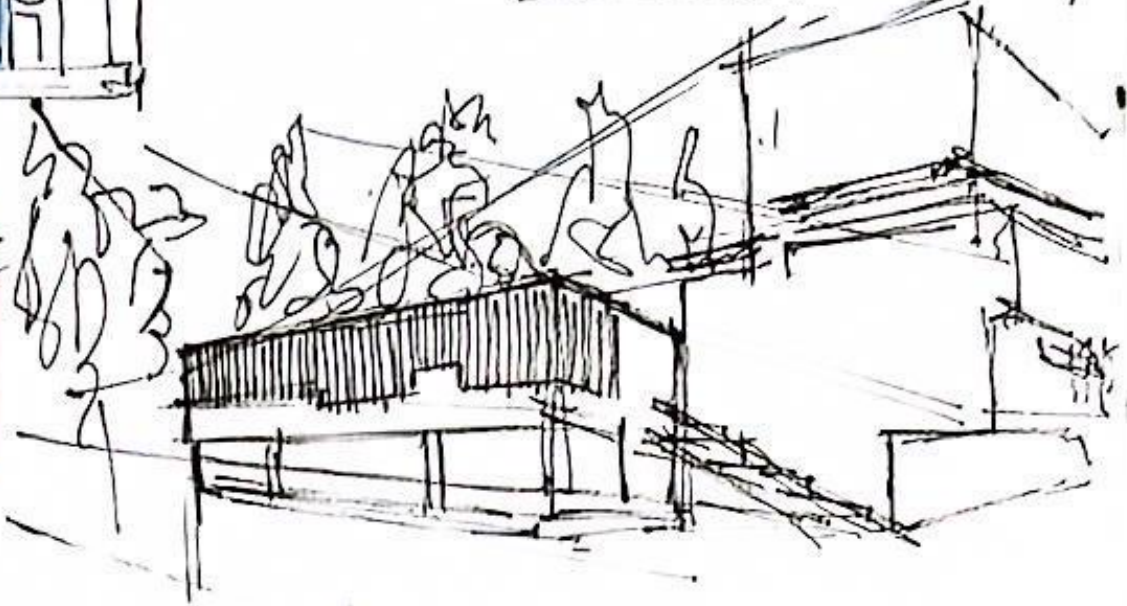
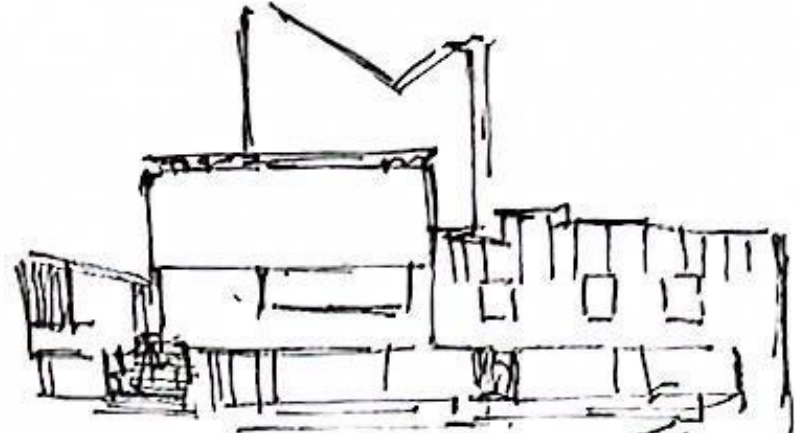


ELEVATION



11
12
13
14
15
16
17
18
19
20
21
22
23
24
25
26
27
28
29
30
31
32
33
34
35
36
37
38
39
40
41
42
43
44
45
46
47
48
49
50
51
52
53
54
55
56
57
58
59
60
61
62
63
64
65
66
67
68
69
70
71
72
73
74
75
76
77
78
79
80
81
82
83
84
85
86
87
88
89
90
91
92
93
94
95
96
97
98
99
100

Sketches



Distinct, clean surfaces with a palette of natural materials, cohesive selection of brick, stone, wood, copper with reinforced concrete columns, floor slabs & ceiling.

- welcome as natural materials create a smooth visual appearance between its surrounding and the architecture

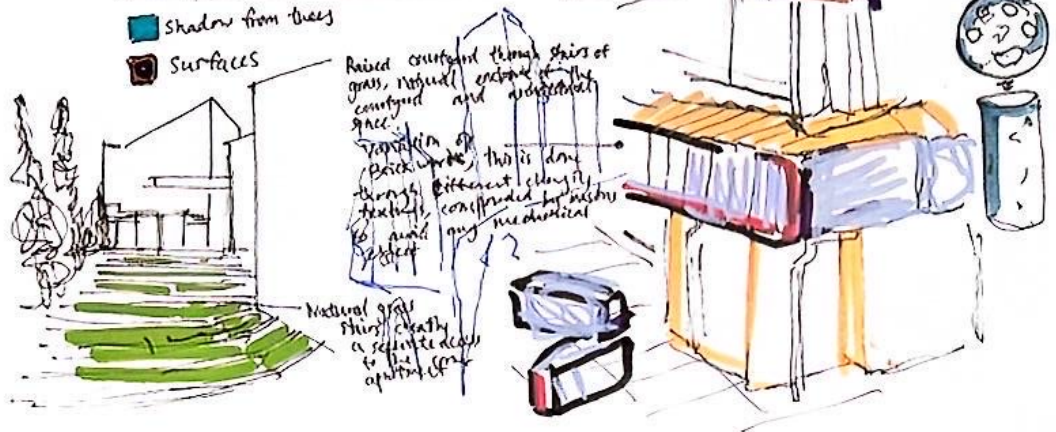


■ Shadow from trees
■ Surfaces

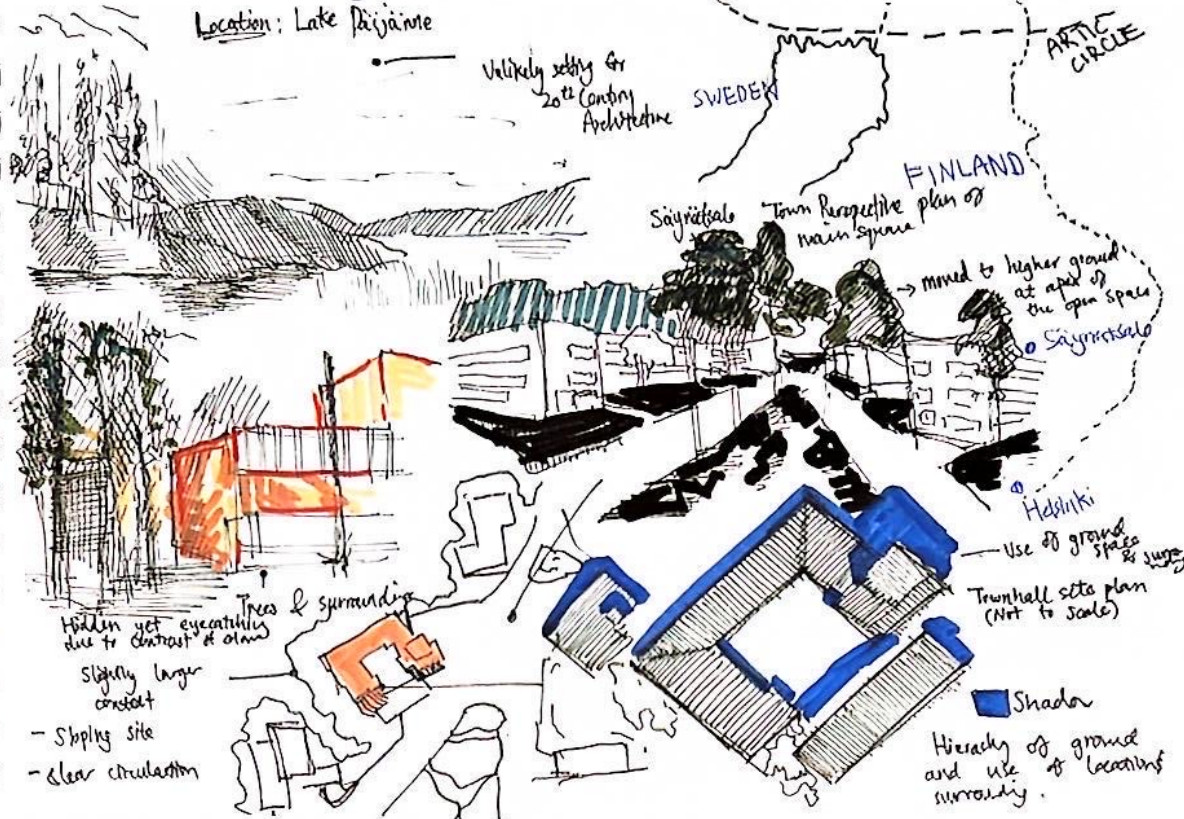
Raised platform through strips of grass, natural entrance of the courtyard and architectural space.

Transition of basic space, this is done through different elements, textures, considered for visual and material

Natural grass strips, create a separate access to the courtyard



Location: Lake Päijänne



Vikely setting for 20th Century Architecture

SWEDEN

FINLAND

ARCTIC CIRCLE

Säynätsalo Town Perspective plan of main square

→ moved to higher ground at apex of the open space

Säynätsalo

Helsinki

Use of ground space & surge

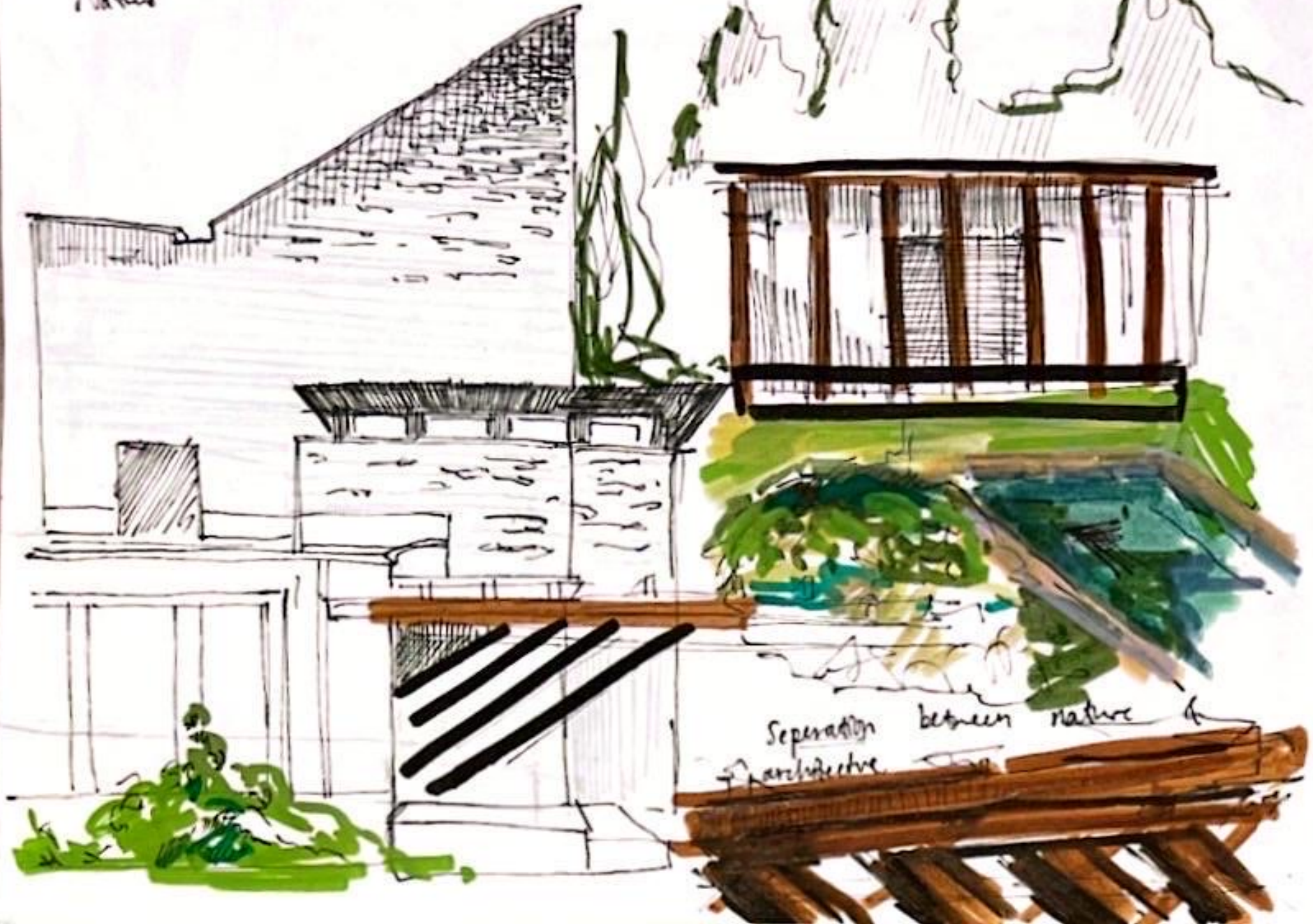
Trunkhall sets plan (NOT to scale)

■ Shadow
Hierarchy of ground and use of location's surround.

Trees & surrounding
Hidden yet eye-catching due to contrast of color

Slightly larger constant
- Sloping site
- clear circulation

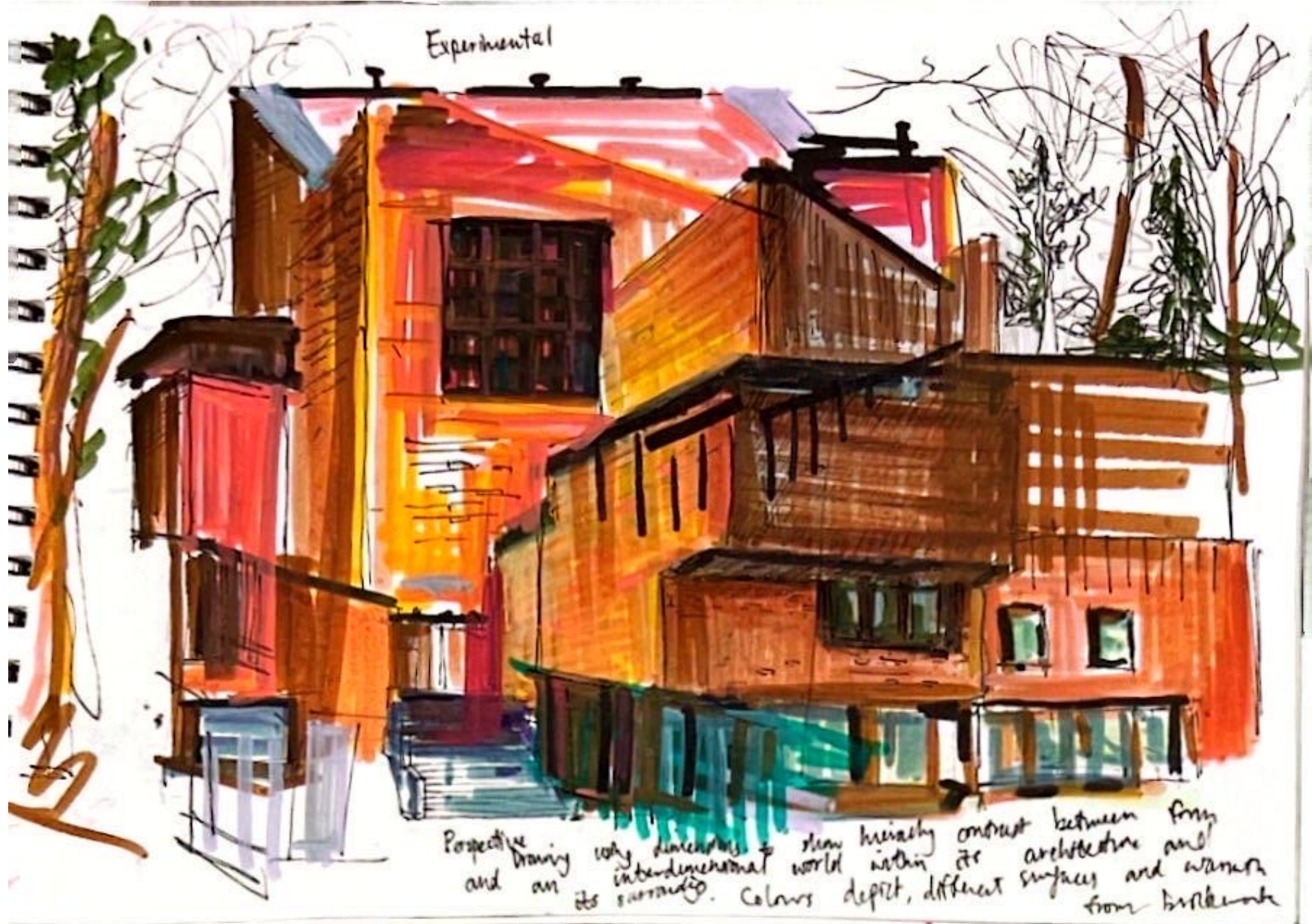
Nature



Separation between nature & architecture



Experimental



Perspective drawing and an
why dimensions to show hierarchy contrast between form
interdimensional world within its architecture and
its surroundings. Colours depict, different surfaces and warm
from background