

School Priorities 2022 - 2023

Every year, our school produces an action plan to help use to focus on specific areas that we aim to make even better. Each time I write, I will give you more insight into the areas we are working on this year.

Firstly, let's look at our overall school purpose and what our main areas of strength are, and translate these into three promises that we make to you as parents:

Outstanding Academic Outcomes

Your child will receive a personalised, challenging and academically rigorous learning experience that guarantees fantastic outcomes and open pathways to the world's best universities.

Wellbeing, Inclusivity & International Mindedness

Your child will be safe, happy and enabled to contribute to a learning community that actively cultivates the principles of international mindedness, wellbeing and inclusivity.

Create the Future

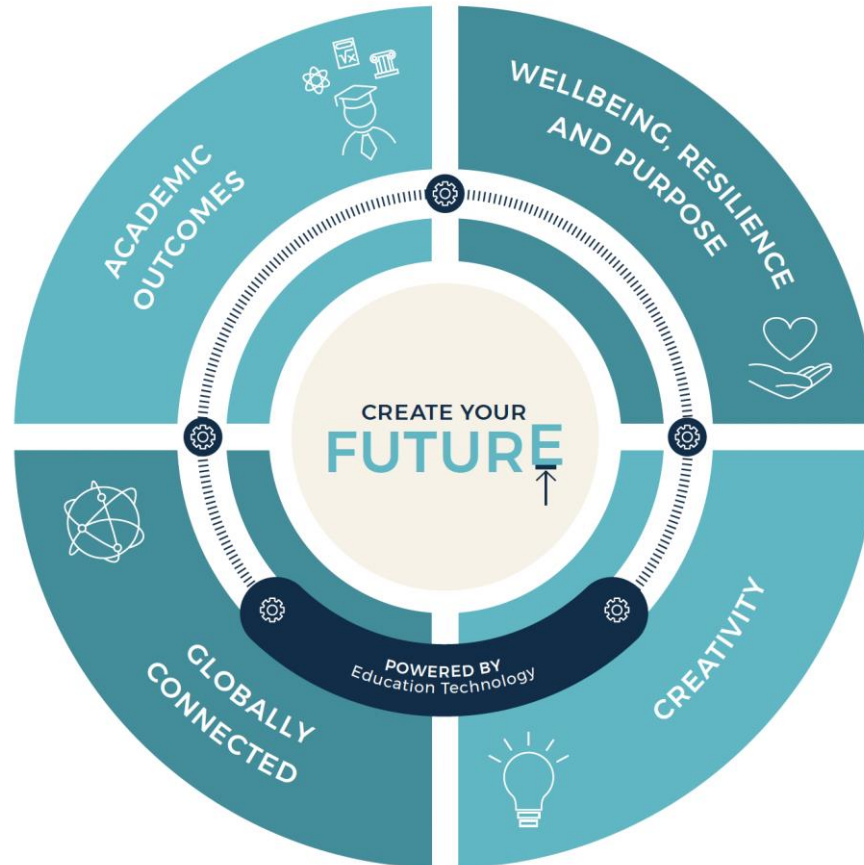
Your child will leave our school with everything they need for success – whatever they choose to be or do in life.

Our new website reflects our updated school vision. If you haven't visited the website recently, take a look!

[The British School of Beijing, Shunyi | Nord Anglia \(nordangliaeducation.com\)](https://www.nordangliaeducation.com)

Nord Anglia Education, BSB Shunyi

Empower our students to achieve better Academic Outcomes than they could in other schools



Nurture wellbeing, resilience & purpose in every member of our global family

Enable our globally connected family of students to collaborate without limits

Foster creativity through incomparable learning experiences in and out of school

COVID-19 Updates

FAMILY TRAVEL OUTSIDE OF BEIJING

We are currently asked to ensure that our students do not have contact with family members who travel outside of Beijing. There are two methods of dealing with essential travel outside of Beijing by a family member:

- 1) If the family member returns to the household, the student stays home for a period of 7 days before returning to school
- 2) The family member returns to Beijing but isolates completely from the student, perhaps staying elsewhere, so that the student can attend school as normal

The school will be held responsible if a covid case impacts on our school and we are not aware of travel of either the student or of family members. You must therefore inform us of travel outside of Beijing.

Email: studentsurvey@bsbshunyi.com

FAMILY TRAVEL OUTSIDE OF BEIJING

If we send a survey to collect information about testing, travel and any other COVID-19 related matters please, please reply!

Our compliance with all data collection exercises, testing requirements and safety protocols keeps us open and able to offer face-to-face learning – please help us by responding to our many requests.

CONTACT INFORMATION

Jayne Needham
Principal
The British School of Beijing, Shunyi
Email: Jayne.Needham@britishschool.org.cn



Proud to deliver



2022 - 2023学年学校发展重点

学校每年都会设立未来的行动目标，对某些领域进行改善。在之后的校长信中我将带给您更多信息，让您能更深入地了解学校情况。

首先，来关注学校总目标和优先发展领域，我们将其转化为向您做出的三个承诺：

优异的学术成绩

您的孩子将在这里享受个性化的、有挑战的、学术严谨的学习体验，这为他们优异的学术成绩提供了保障，并为他们未来进入世界顶尖大学打开了大门。

幸福感，包容及国际化思维

我们为孩子们提供安全，快乐的体验，培养他们积极奉献学习社区的精神，这些素质让他们具备了国际视野，增加了他们的幸福感和包容性。

创造未来

在孩子们离开学校的那一刻，无论未来做出何种选择，都会具备获得成功的所需要的素质。

学校改版的新网站刊登了学校的愿景和任务。如果您还没有关注，快去看看吧。

[The British School of Beijing, Shunyi | Nord Anglia \(nordangliaeducation.com\)](http://The British School of Beijing, Shunyi | Nord Anglia (nordangliaeducation.com))

诺德安达教育，北京英国学校顺义校区

让学生们取得比在其他学校更好的学业成绩

连接世界各地学生家庭
创建无限合作



让我们全球大家庭的每一位成员都有幸福感、有适应力、有目标

通过校内的优质学习体验培养创造力

COVID-19 最新消息

出京家庭成员

我校收到相关要求，需保证学生不与出京的家庭成员接触。若有家庭成员出京，建议您遵照以下两种方式：

1. 该家庭成员返京后，同住学生需在返校前居家观察7日。
2. 该家庭成员返京后在其他地方隔离，与学生无接触，该生可以正常上学。

如果学生及其家庭成员未上报出行记录，致校内出现阳性或密接病例，则学校将承担由此产生的责任。因此，请务必告知我们家庭成员出京情况。

联系方式：

studentsurvey@bsbshunyi.com

出京家庭成员

如果您收到我校发出的调查问卷，收集核酸检测、出行等疫情相关信息，烦请务必回复！

只有遵守信息收集、核酸检测等要求及安全规定，学校才能保持正常运转，孩子们也才能来校学习——后续还将会有其他问卷需要您配合填写，再次感谢。

联系信息

Jayne Needham

校长

北京英国学校，顺义校区

邮箱: Jayne.Needham@britishschool.org.cn



Proud to deliver

