



THE BRITISH SCHOOL
OF BEIJING, SHUNYI
A NORD ANGLIA EDUCATION SCHOOL



WELCOME TO THE DIPLOMA PROGRAMME

MEET AND GREET

SEPTEMBER 14TH 2023



OBJECTIVES FOR TODAY... YEAR 12 (DP) INDUCTION

- Get to know the DP Coordinator and the IB staff that will support you over the next two years
- Learn more about the IB Programme and the benefits that it provides
- Understand key aspects of the IB programme like the Core and the Learner Profile
- Successfully familiarise yourself with ManageBac
- Be able to contact the IB Team should you have any further needs



Getting to know Mr. Peebles

- Been teaching and working in IB Schools for the past 12+ years
 - United States (Texas)
 - Guangzhou
 - Macau
- Wife works in Primary at BSB as a Learning Support Teacher
- Outside of school I enjoy playing tennis, ice hockey, and traveling
- I studied at Texas A&M University and recently earned my Master's of Education in Educational Leadership
- Besides being your DPC I will be teaching IGCSE and DP Economics as well as IGCSE Global Perspectives. Additionally, I work for the IB as an examiner for Economics and the Extended Essay.



Meet Your IBDP Team!



IBDP Coordinator
Mr. Peebles



Assistant IBDP Coordinator
Dr Kim



CAS Coordinator
Ms. Donnelly



Higher Education Advisor
Mr. Luke



12A Ms. Massaguer



12B Mr. Needham



Celebrating BSB Results

	2016	2017	2018	2019	2020	2021	2022	2023
APS	34	34	34	32	34	37	36	35
Diploma Pass rate	84%	84%	86%	96%	100%	100%	100%	95%
Highest score	44	43	45	41	43	45	45	43
%40+	12%	16%	14%	4%	16%	33%	38%	19%
Avg. subject grade	5.35	5.34	5.38	5.22	5.43	5.84	5.67	5.42
Avg. core points	1.24	1.35	1.30	0.52	0.77	1.44	1.94	2.05



WHERE CAN YOU GO WITH AN IB DIPLOMA FROM BRITISH SCHOOL BEIJING...

BSB CLASS OF 2023

43 – LONDON SCHOOL OF ECONOMICS – HISTORY

42 – NATIONAL UNIVERSITY SINGAPORE – CHEMICAL ENGINEERING

39 – UNIVERSITY OF EDINBURGH – LAW

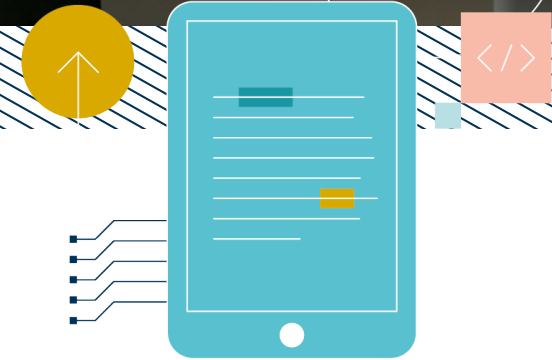
39 – PURDUE UNIVERSITY – ANIMAL SCIENCES

34 – UNIVERSITY OF YORK – LAW

25 – CARDIFF UNIVERSITY - PSYCHOLOGY



IB CURRICULUM MODEL



Project
DNA

WHAT SUPPORT WILL YOU GET

- Daily form time
- Weekly guidance
- Drop-ins to the IB Advisory Hub
- Managebac
- MS Teams
- Deadlines calendar
- Academic support
- End of term reports
- Progress tracking
- Mentoring
- A full team of committed IB teachers



CREATE YOUR
FUTURE



USE OF MANAGEBAC

- SUBJECT RESOURCES
- ASSESSMENT CALENDAR
- ASSIGNMENTS
- MESSAGES
- CAS PORTFOLIO
- EE WORK
- TOK WORK



ManageBac



Nord Anglia students are encouraged to...

...be globally minded

...be great communicators

... be creative and resilient



...make an impact

...adapt

...think critically

OUR CULTURE



IB learner profile

The aim of all IB programmes is to develop internationally minded people who, recognizing their common humanity and shared guardianship of the planet, help to create a better and more peaceful world.

As IB learners we strive to be:

INQUIRERS

We nurture our curiosity, developing skills for inquiry and research. We know how to learn independently and with others. We learn with enthusiasm and sustain our love of learning throughout life.

KNOWLEDGEABLE

We develop and use conceptual understanding, exploring knowledge across a range of disciplines. We engage with issues and ideas that have local and global significance.

THINKERS

We use critical and creative thinking skills to analyse and take responsible action on complex problems. We exercise initiative in making reasoned, ethical decisions.

COMMUNICATORS

We express ourselves confidently and creatively in more than one language and in many ways. We collaborate effectively, listening carefully to the perspectives of other individuals and groups.

PRINCIPLED

We act with integrity and honesty, with a strong sense of fairness and justice, and with respect for the dignity and rights of people everywhere. We take responsibility for our actions and their consequences.

OPEN-MINDED

We critically appreciate our own cultures and personal histories, as well as the values and traditions of others. We seek and evaluate a range of points of view, and we are willing to grow from the experience.

CARING

We show empathy, compassion and respect. We have a commitment to service, and we act to make a positive difference in the lives of others and in the world around us.

RISK-TAKERS

We approach uncertainty with forethought and determination; we work independently and cooperatively to explore new ideas and innovative strategies. We are resourceful and resilient in the face of challenges and change.

BALANCED

We understand the importance of balancing different aspects of our lives—intellectual, physical, and emotional—to achieve well-being for ourselves and others. We recognize our interdependence with other people and with the world in which we live.

REFLECTIVE

We thoughtfully consider the world and our own ideas and experience. We work to understand our strengths and weaknesses in order to support our learning and personal development.

The IB learner profile represents 10 attributes valued by IB World Schools. We believe these attributes, and others like them, can help individuals and groups become responsible members of local, national and global communities.



THE BRITISH SCHOOL
OF BEIJING, SHUNYI
A NORD ANGLIA EDUCATION SCHOOL

THE YEAR OF BELONGING.



CARING



EXCELLENCE

GROWTH

RESPECT



Confirming course selection

- For those students enrolling in the full International Baccalaureate Programme, you will need to have three courses at the Higher Level and three courses at the Standard Level.
- I have been given your selections from last academic year, but I want to confirm these selections.
- I will have a brief chat with each one of you to make sure that I have the correct information so that all your classes can be set up.
- If you have anything else, you would like to share with me you are more than welcome to do so.
- Being smart about your course selection
- You have a two-week “shopping” period where you can make amendments to your selection, and we will do our best to accommodate you.



PLEASE REACH OUT TO ME IF YOU EVER HAVE ANY NEEDS

- Send me an email @ gregory.peebles@britishschool.org.cn
- Message me on ManageBac
- Message me on Microsoft Teams
- Schedule a meeting with me via Calendly
- Schedule a meeting via the Secondary Reception

ANY QUESTIONS?

