



LA CÔTE INTERNATIONAL SCHOOL  
AUBONNE

A NORD ANGLIA EDUCATION SCHOOL

# LCIS DIPLOMA PROGRAMME CURRICULUM

September 2022

# CONTENT

1. What is the DP?
2. What are the benefits of the DP?
3. What does the DP Curriculum entail?
4. Is the full Diploma Programme the right choice?
5. DP Certification
6. Questions?



# THE IB DIPLOMA PROGRAMME



# WHAT IS THE IB DIPLOMA PROGRAMME?



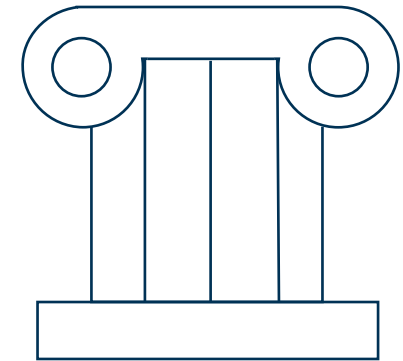
- ✚ Established in 1968, the International Baccalaureate (IB) Diploma Programme (DP) was the first programme offered by the IB and is taught to students aged 16-19.
- ✚ As of August 2022, there are 2,932 schools offering the DP, in 150 different countries worldwide.
- ✚ Nord Anglia has the largest number of students participating in the DP programme globally.



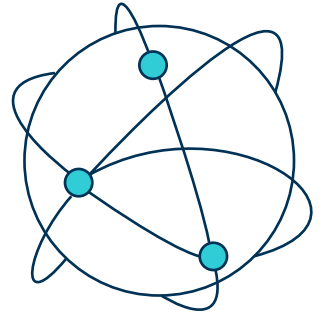


# ORIGIN OF THE IBDP

- ⊕ The DP was established to provide students with a balanced education, facilitate geographic and cultural mobility, to promote international understanding and to help nurture responsible adults of the future.
- ⊕ It was created by teachers at the International School of Geneva, with assistance from several other international schools.
- ⊕ Since then, innovative and committed teachers and examiners from around the world have played a significant role in the development of the programme which is constantly being updated.

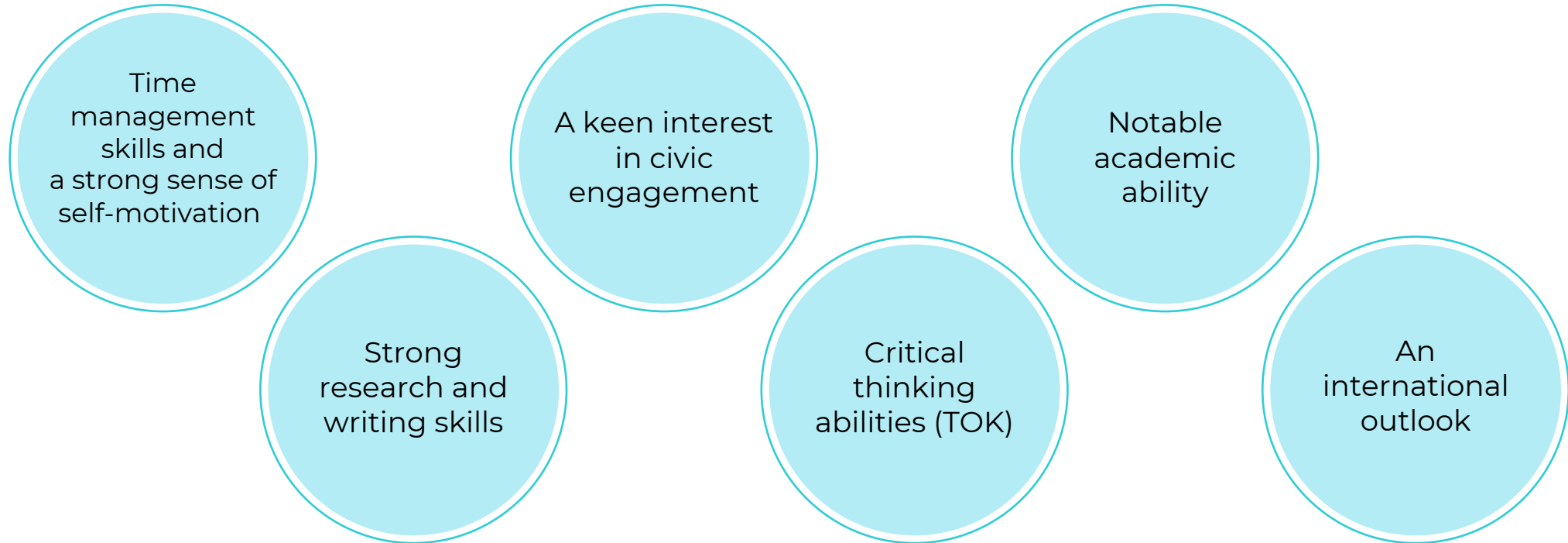


# BENEFITS FOR UNIVERSITIES

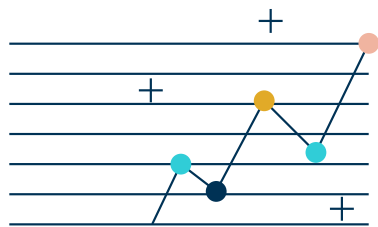


Universities and colleges benefit from recruiting and admitting students from IB programmes in a range of ways.

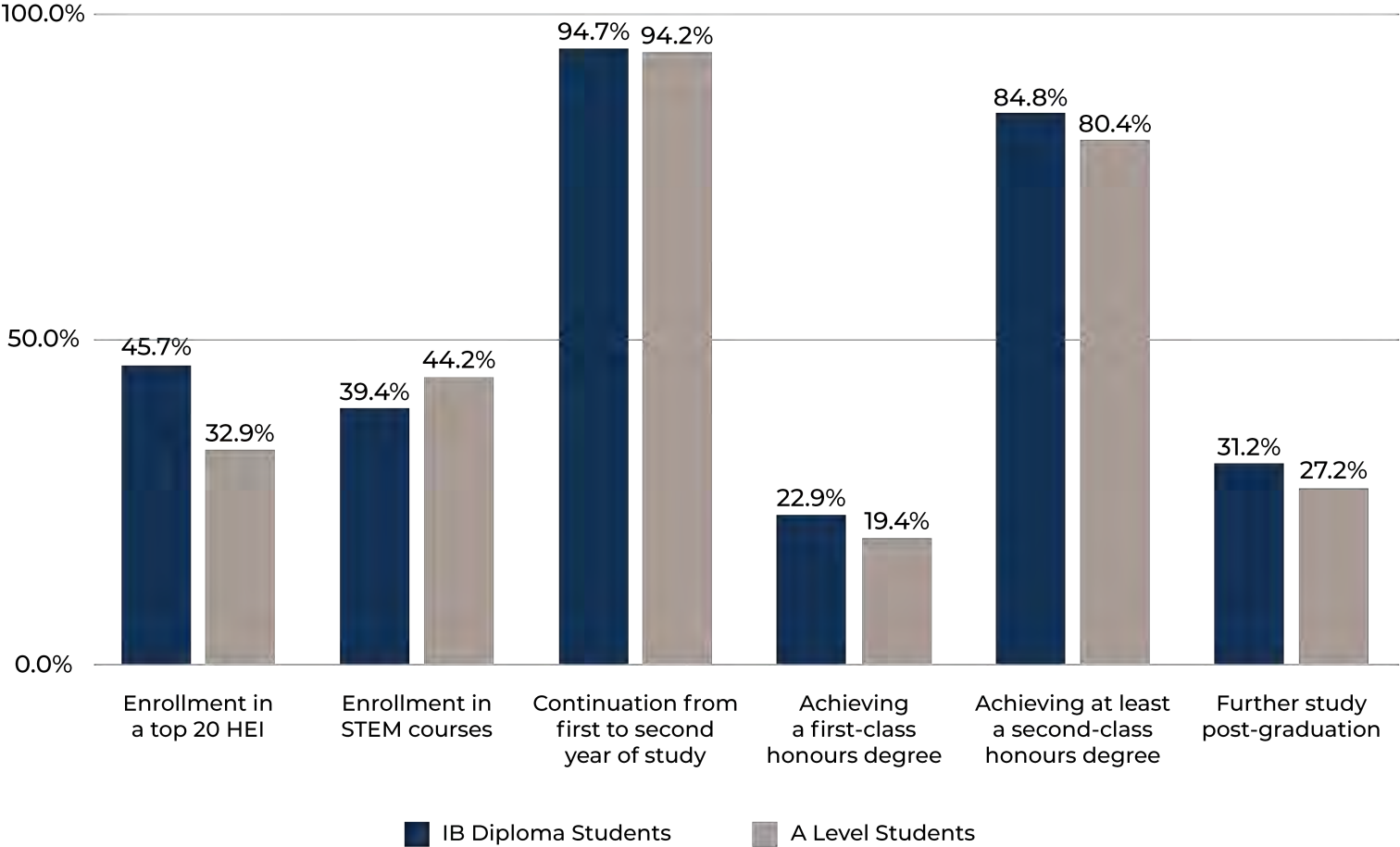
As a result of their time in the IB, students develop:



# BENEFITS FOR UNIVERSITIES



UNIVERSITY ENROLLMENT AND OUTCOMES



# CURRICULUM

The International Baccalaureate (IB) Diploma Programme (DP) curriculum sets out the requirements for study of the DP.

The full programme is made up of the **DP CORE** and **SIX (6) SUBJECT GROUPS**

**THE CORE** is an essential part of the full Diploma Programme and is made up of the three required components, (EE, TOK, CAS) and it aims to broaden students' educational experience and challenge them to apply their knowledge and skills.



# THE DP CORE

The three Core elements are:

## THEORY OF KNOWLEDGE

**(TOK)** in which students reflect on the nature of knowledge and on how we know what we claim to know.

## THE EXTENDED ESSAY

**(EE)**, which is an independent, self-directed piece of research, finishing with a 4,000-word paper.

## CREATIVITY, ACTIVITY,

**SERVICE (CAS)**, in which students complete a project related to those three concepts.

# THE CORE: THE THEORY OF KNOWLEDGE

Coordinator: Ms. Phelia Arlitt

- ⊕ Theory of knowledge (TOK) is assessed through an exhibition based around three objects and their real-world context and a 1,600 word essay chosen from a prescribed list of titles.
- ⊕ It asks students to reflect on the nature of knowledge, and on how we know what we claim to know. It is based around the TOK concepts and the different areas of knowledge.
- ⊕ TOK is mandatory for all students on the full Diploma Programme.

TOK concepts:



# TOK

# THE CORE: THE EXTENDED ESSAY

Coordinator: Mrs. Elisa Jimenez-Grant

- ⊕ The extended essay is a required component of the full IB Diploma Programme. It is an independent, self-directed piece of research, finishing with a 4,000-word paper, a viva and a written reflection.
- ⊕ Each student is assigned an EE supervisor to help and guide them with the content of the essay.

The extended essay provides:

- the capacity to analyse, synthesize and evaluate knowledge
- practical preparation for undergraduate research
- an opportunity for students to investigate a topic of special interest to them, which is usually related to one or more of the student's six DP subjects.



# THE CORE: CREATIVITY, ACTIVITY, SERVICE (CAS)

Coordinator: *Mr. Dan Porteous*

CAS requires students to take part in a range of experiences and at least one project. These should involve:

- + real, purposeful activities, with significant outcomes
- + at least one month long, group project
- + personal challenge
- + thoughtful consideration, such as planning, reviewing progress & reporting
- + reflection on 7 learning outcomes

We don't prescribe specific projects or activities to students, but we do provide opportunities.

The letters 'CAS' are rendered in a large, light blue outline font, positioned on the right side of the slide.

# THE CORE: CAS EXAMPLES

Coordinator: *Mr. Dan Porteous*



The CAS project can address any single strand of CAS, or combine two or all three strands of creativity, activity and service.

## Example of a CREATIVITY

### Project:

A musician could learn a particularly difficult piece, or a different style of playing, whilst a non musician could learn how to play an instrument.

## Example of an ACTIVITY

### Project:

These do not have to be sports-related or competitive. A valuable activity project could help a student overcome a personal fear, such as rock climbing.

## Example of a SERVICE

### Project:

These must be beneficial for the community as well as providing a learning opportunity for the student.

# GRADING OF THE CORE

All extended essays are externally assessed by examiners appointed by the IB. They are marked on a scale from 0 to 34.

The score a student receives relates to a band. The bands are:





# THE DIPLOMA POINTS MATRIX

		THEORY OF KNOWLEDGE					
		Excellent A	Good B	Satisfactory C	Mediocre D	Elementary E	Not submitted
EXTENDED ESSAY	Excellent A	3	3	2	2	1 + Failing condition	N
	Good B	3	2	1	1	1 + Failing condition	N
	Satisfactory C	2	1	1	0	1 + Failing condition	N
	Mediocre D	2	1	0	0	1 + Failing condition	N
	Elementary E	1 + Failing condition	1 + Failing condition	1 + Failing condition	1 + Failing condition	1 + Failing condition	N
	Not submitted	N	N	N	N	N	N

# THE DIPLOMA POINTS MATRIX

Students are required to take 1 subject from each of these groups, **3 at Higher Level (HL)** and **3 at Standard Level (SL)**.

- 1. Studies in Language and Literature
- 2. Language Acquisition
- 3. Individuals and Societies
- 4. Sciences
- 5. Mathematics
- 6. The Arts\*

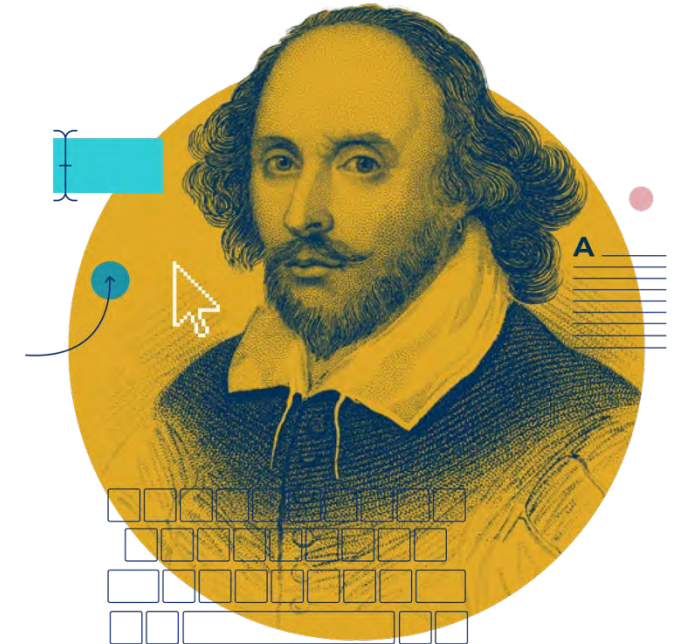
*\*can select another subject from groups 1-4 instead of Group 6.*



# GROUP 1: STUDIES IN LANGUAGE AND LITERATURE

- + English Language and Literature (SL/HL)
- + French Language and Literature (SL/HL)

A bilingual diploma is awarded to candidates who complete and receive a grade 3 or higher in two languages selected from Group 1.



## GROUP 2: LANGUAGE ACQUISITION

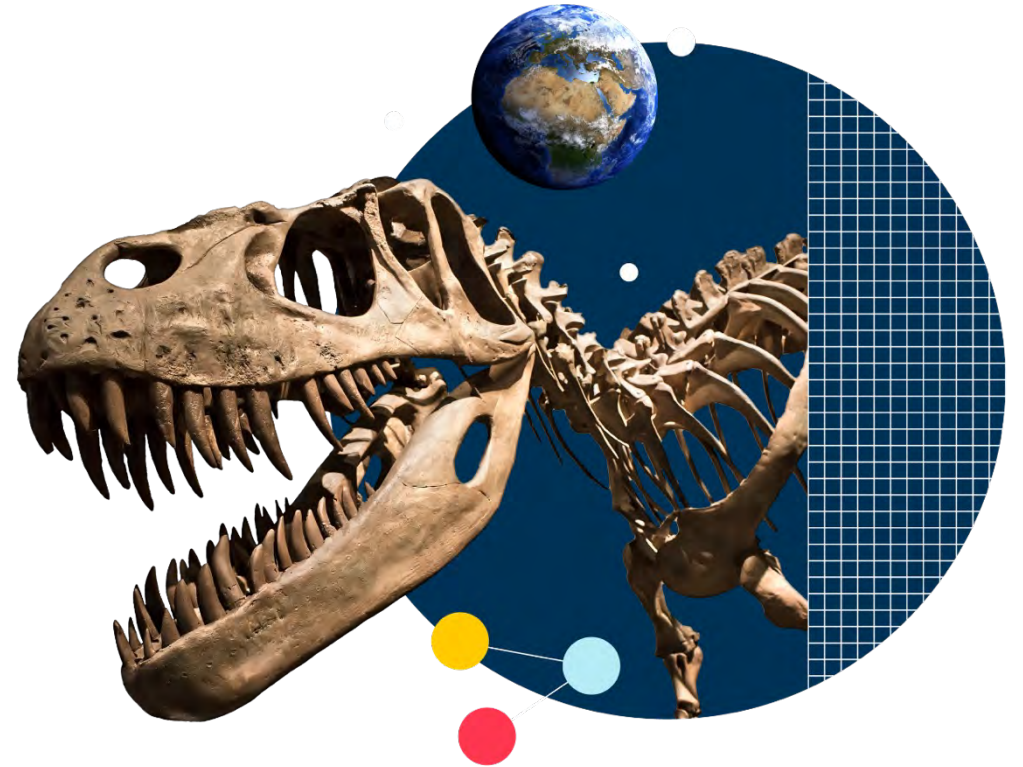
- + Language B: English (HL/SL), French (HL/SL), German (HL/SL),
- + Language Ab Initio: French (SL), Spanish (SL)





# GROUP 3: INDIVIDUALS AND SOCIETIES

- + Geography (SL/HL)
- + History (SL/HL)
- + Business Management (SL/HL)



# GROUP 4: SCIENCES

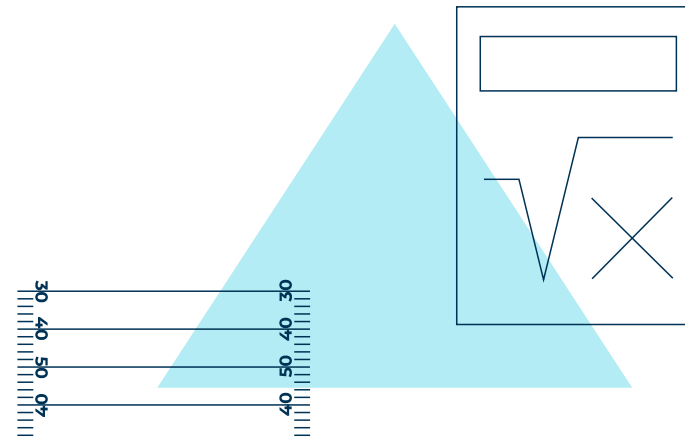
- + Biology (SL/HL)
- + Chemistry (SL/HL)
- + Physics (SL/HL)
- + Design Technology (SL/HL)
- + Sports, Exercise and Health Science (SL/HL)
- + Computer Science (SL/HL)





# GROUP 5: MATHEMATICS

- + Mathematics: Analysis and Approaches (SL/HL). “Pure Maths”
- + Mathematics: Applications and Interpretation (SL/HL)



## GROUP 6: THE ARTS\*

- + Visual Art (SL/HL)
- + Film (SL/HL)
- + Music (SL/HL)

*\* Students can select another subject from Groups 1-4 instead of one of these options.*



# CHOOSING SUBJECTS IN THE DIPLOMA PROGRAMME

Students will take some subjects at **higher level (HL)** and some at **standard level (SL)**. HL and SL courses differ in scope but are measured according to the same grade descriptors, with students expected to demonstrate a greater body of knowledge, understanding and skills at higher level.

Each student takes **at least three** (but not more than four) **subjects** at **Higher Level**, and **the remaining at Standard Level**.

**Standard level** subjects take **up to 150 teaching hours**.  
**Higher level** comprises **240 teaching hours**.

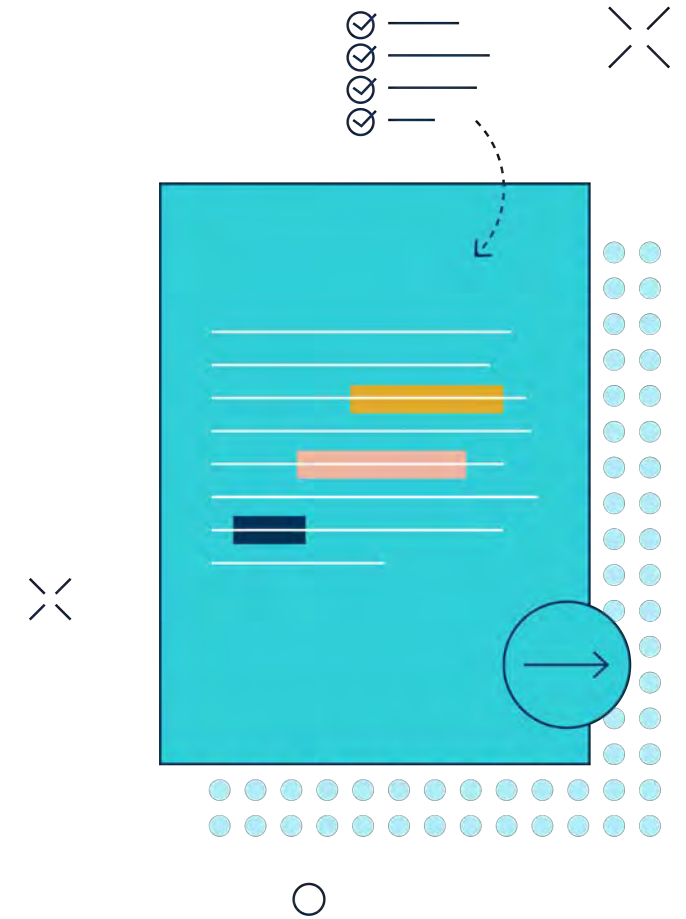
**HL / SL**

# EXTERNAL ASSESSMENT

Examinations form the basis of the assessment for most courses. This is because of their high levels of objectivity and reliability and therefore externally marked.

There may be a maximum of three papers per subject and they include:

- ✚ essays
- ✚ structured problems
- ✚ short-response questions
- ✚ data-response questions
- ✚ text-response questions
- ✚ case-study questions
- ✚ multiple-choice questions



# INTERNAL ASSESSMENT (IA)

Teacher assessment is also used for most courses. These are marked internally and are sent away for external moderation by the IBO.

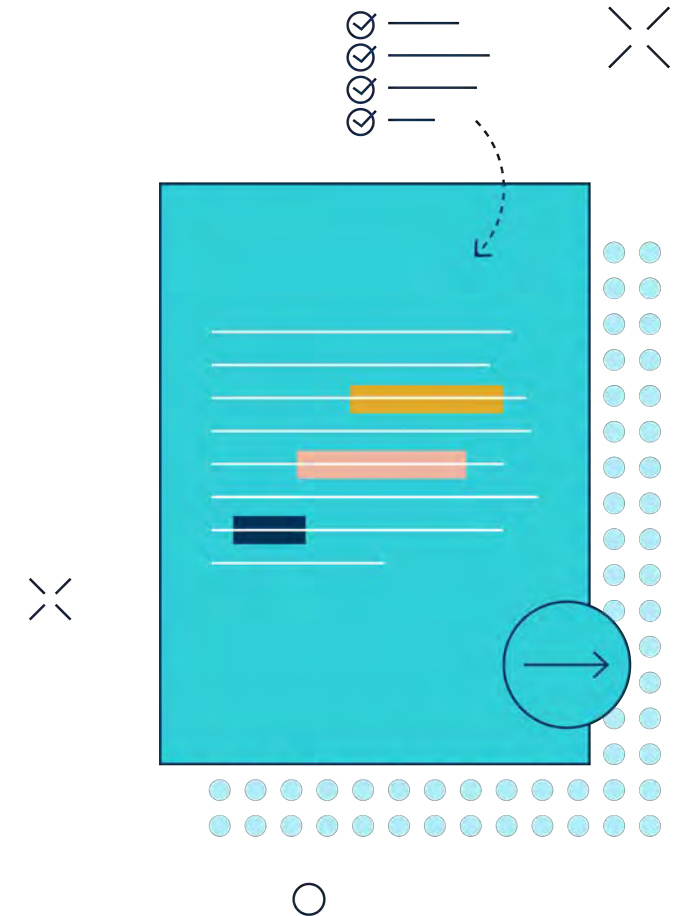
The IA's includes:

- ⊕ oral work in languages
- ⊕ fieldwork in Geography
- ⊕ laboratory or field work in the Sciences
- ⊕ investigations in Mathematics
- ⊕ artistic performances & portfolios



# IBDP ASSESSMENT THROUGHOUT THE COURSE

- ⊕ Throughout the two year course, interim grades and/or report grades are given every half term (approx. every 6 weeks).
- ⊕ The grades are made up of a number 7-1 which are linked to student attainment and effort grades are also provided. (The exception is TOK, which is graded A - E).
- ⊕ 7 and A are an exceptional mark and a 4 and C are considered a pass.
- ⊕ The interim grades posted to parents reflect all work carried out at the time of reporting – they are not predicted grades. These grades can therefore change significantly depending the content being covered at the time.
- ⊕ All important classwork and test marks are posted on Managebac throughout the year.





# DIPLOMA PROGRAMME CERTIFICATION



The Core (TOK, CAS, EE) must be completed; up to 3 points are available for successful completion.

Each subject is Graded 1-7, with a 4 considered a 'pass'.

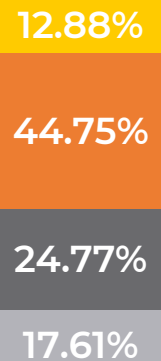
6 subjects x 7 points = 42

The overall score for the diploma is out of 45.

Students must complete the Core and have an overall score of 24 points to be awarded the Diploma.

In August 2022, of the students who were awarded full IB Diploma only 651 achieved 45 points (0.74%).

World Core Points 2022  
(ave 1.53)



# DIPLOMA PROGRAMME CERTIFICATION



## OTHER CAVEATS

No grade 1 in  
any subject



No grade 2 in HL



HL subjects  
must total at  
least 12 points



No more than  
one grade 2 in  
SL subject



SL subjects  
must total at  
least 9 points



Overall, no more  
than three grade  
3's or below



# CERTIFICATES AND TARIFF POINTS

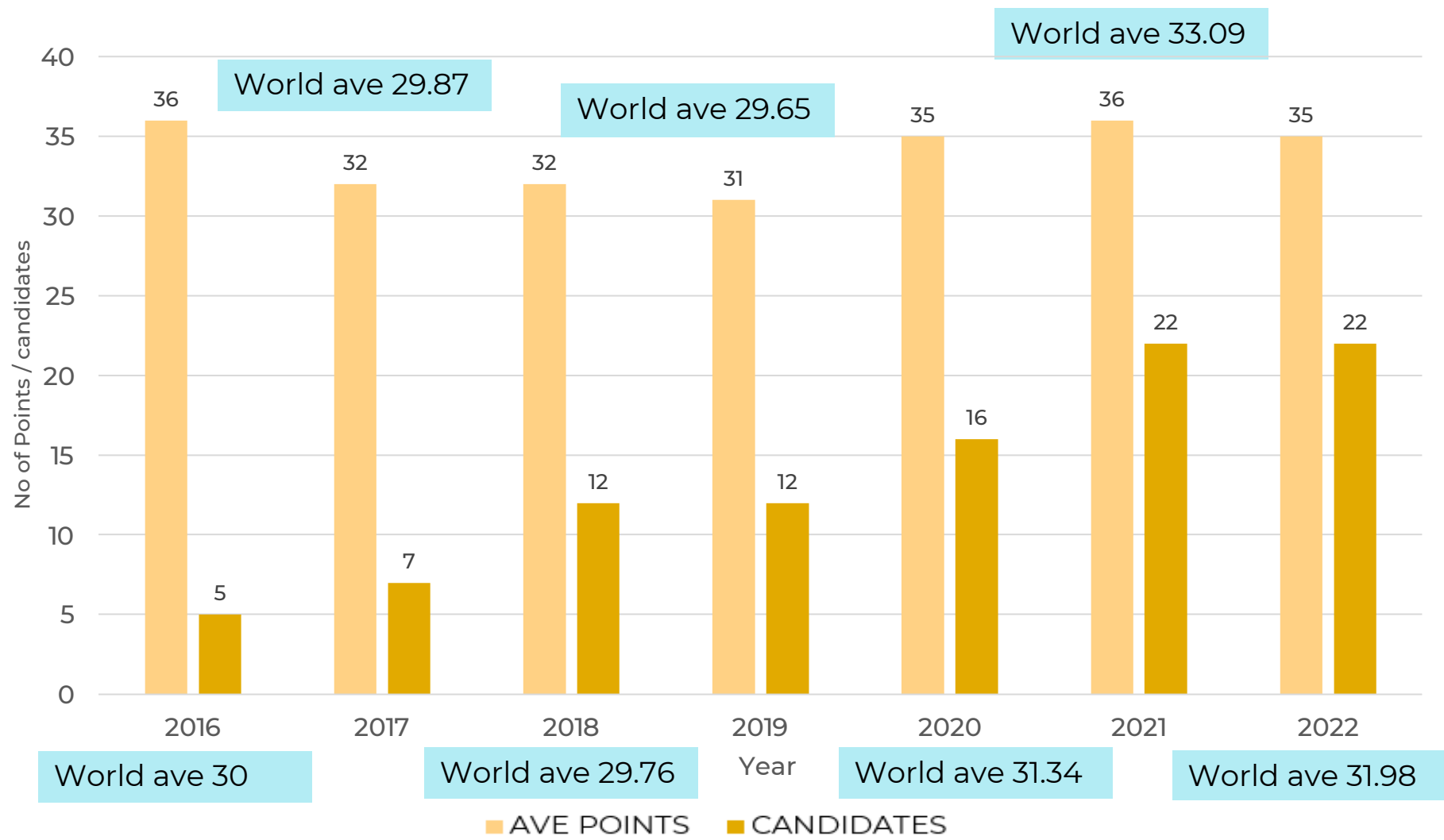
- + If separate courses (certificates) are taken rather than the full Diploma Programme the results of each subject can be converted into tariff points.
- + Tariff points are used as an entry requirement for higher education institutions.



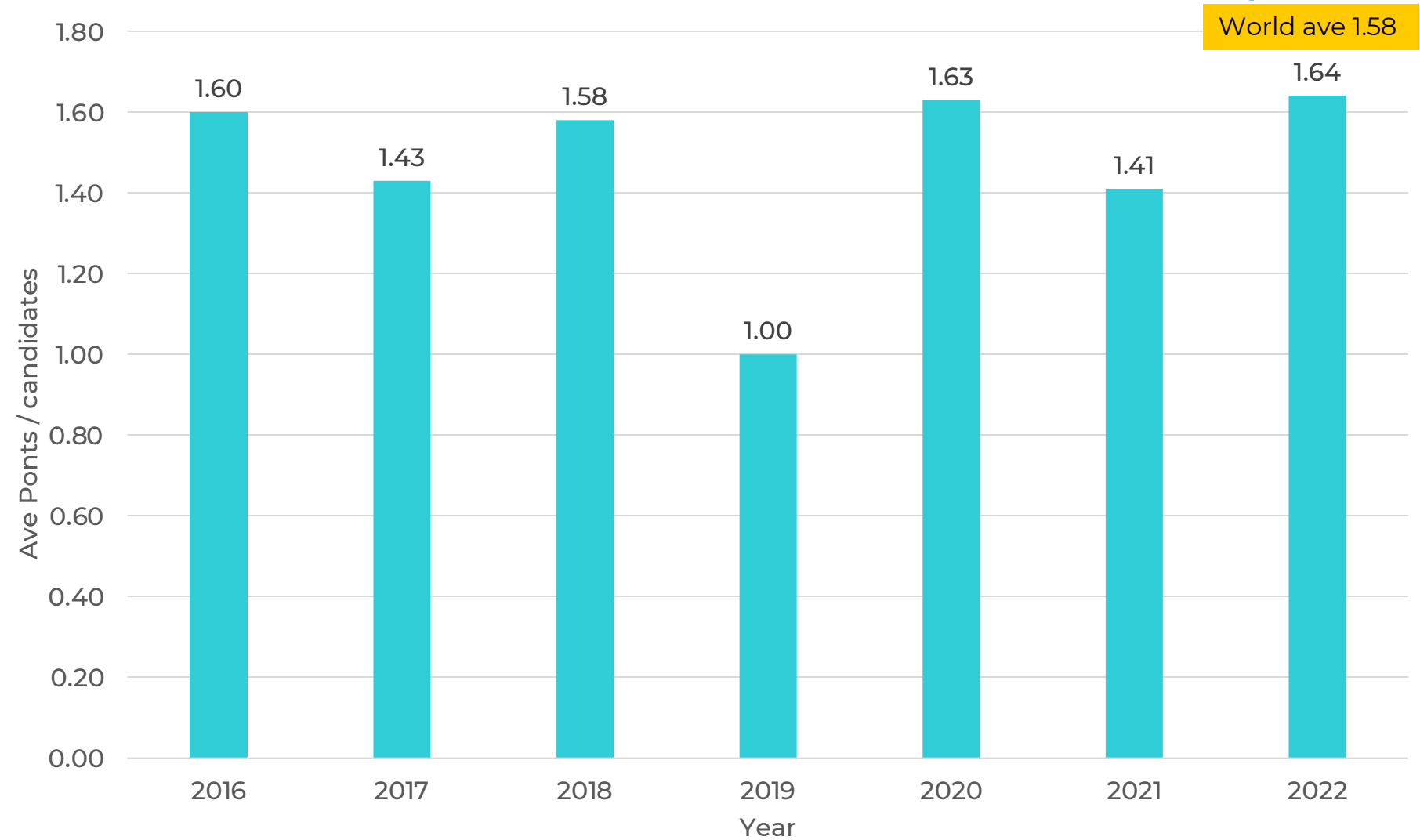
Below are scores for each component of the IB Diploma:

Higher Level		Standard Level		Extended Level		Theory of Knowledge
H7	56	S7	28	A	12	12
H6	48	S6	24	B	10	10
H5	32	S5	16	C	8	8
H4	24	S4	12	D	6	6
H3	12	S3	6	E	4	4

# AVERAGE POINTS COMPARISON TO PREVIOUS RESULTS

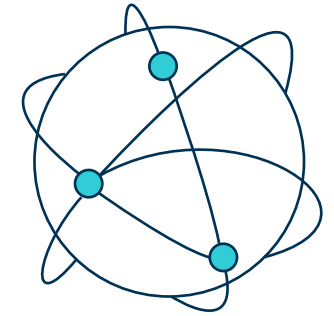


# CORE POINTS COMPARISON TO PREVIOUS RESULTS (EE and TOK)



# 2022 UNIVERSITY DESTINATIONS

Brighton University	→	Film production
Bath University	→	Physics & Theoretical Physics
University of Geneva	→	International Relations
Anglia Ruskin University	→	Photography
Bath University	→	Educational Psychology
University of Lausanne	→	Biology
Brighton University	→	Psychology with Counselling
Glion	→	Hospitality Business
Cours Florent	→	Screen Acting
University of Twente	→	Engineering
University of Lausanne	→	Biology
Yverdon HEIGH University	→	Science and Informatics
Falmouth University	→	Dance and Choreography
University of Liverpool	→	Geography
Florida State University	→	Undergraduate
Newcastle University	→	International Business
University of Geneva	→	Mathematics
Edinburgh Napier University	→	Film Production
Cardiff University	→	Computer Science
Cardiff University	→	Human and Social Sciences
University of Birmingham	→	Mathematics
University College Utrecht	→	Pre-medical Course



# TIMELINE FOR CURRENT DP1 & DP2 COHORT



EVENT	DATE
January / Mock Examinations	Monday, 23rd January to Friday, 3rd February
DP2 Coursework Uploads	March / April 2023
DP2 IBDP Examinations	Friday, 28th April to Friday, 19th May June
DP1 Summer Examinations	Monday, 22nd May to Friday, 2nd June
DP1 University Admissions Process	June 2023 to November 2023
DP1 Group 4 Project	June 2023 or Aug 2024

Dates & Deadlines	Description	Action
25th Aug to 21st Sept	Non Oxbridge Personal statement review (First Draft)	DWI
Fri 26th August 2022	Maths IA Essay Plan and References	LMO/VGO
Fri 26th August 2022	EE: 1st draft completed and handed in	EJI/ EE Supervisors
Mon 29th August 2022	Business: IA First full Draft	DWI
Thursday 1st Sept 2022	TOK Exhibition	PAR
Mon 5th September 2022	SEHS: First Full draft of IA	CBO
Wed 14th September 2022	History IA: section A completed	ASE/AYU
Mon 26th September 2022	SEHS: Completed final IA	CBO
Wed 28th Sept 2022	Oxbridge & Medics - Final Copy Personal Statements	JBA
Thurs 29th Sept 2022	Film: Comparative Study	JBR
Fri 7th Oct 2022	EE: Final copy submission	EJI /EE Supervisors
Mon 10th Oct 2022	Oxbridge & Medics UCAS Upload	DWI
Mon 10th Oct 2022	Business IA: Final Copy	JBA
Wed 12th Oct 2022	UCAS UK university applications for any course at the universities of Oxford and Cambridge, or for most courses in medicine, veterinary medicine/science, and dentistry	DWI
Fri 14th Oct 2022	Maths: First Draft IA	LMO/VGO
Fri 14th Oct 2022	Non-Oxbridge Personal statement (Final Draft)	DWI

CORE

Group 1

Group 2

Group 3

Group 4

Group 5

Group 6

Higher Ed

Holiday

EXAMS



Mon 17th Oct - Fri 28th Oct 2022			Mid-Term Break		
Monday 31st October 2022	English HL: Final version of essay	EHA			
Fri 4th Nov 2022	Non - Oxbridge UCAS upload	DWI			
Fri 4th Nov 2022	Chemistry: Final copy IA due	BTH			
Mon 14th Nov 2022	TOK: Written plan for essay and first reflection uploaded to managebac	PAR / APR			
Fri 18th Nov 2022	EE: Completed Reflections and Planning and Progress Form	EJI / APR, EE Supervisors			
Mon 21st Nov 2022	CAS: All Activities and reflections uploaded to managebac	DPO			
Mon 21st Nov 2022	History IA: section C completed	ASE/AYU			
Fri 25th Nov 2022	Collaborative Film	JBR			
Mon 28th Nov 2022	French B SL (1st part) & German B	RBU			
Fri 2nd Dec 2022	CAS: Final interviews	DPO			
Mon 12th Dec 2022	TOK: Upload of Interim reflection to managebac	PAR			
Mon 12th Dec 2022	Geography IA: First Full Draft Complete	KMC			
Fri 16th Dec 2022	Math IA: Full First Draft	LMO/VGO			
Fri 16th Dec 2022	English IO's Completed	EHA			

Mon 19th Dec - Fri 6th Jan 2023			Winter Break		
Mon 9th Jan 2023	School UCAS UK university application deadline for majority of courses; some art and design courses 24th March	DWI			
Fri 13th Jan 2023	Design HL&SL IA: complete first draft due	SNE			
Fri 20th 2023	French A SL + HL: Orals	SLO			
Fri 20th Jan 2023	History IA:Final copy due	ASE/AYU			
Mon 23rd Jan - 3rd Feb 2022	DP2 Mock Exams				
Mon 6th Feb 2023	Geography IA: Final vesrion due	KMC			
Fri 10th Feb 2023	Biology and Physics final vesion of IA's due	APR & DTA			
Mon 13th - Fri 17th Feb 2023			Spring Half Term		
Mon 20th Feb 2023	Maths: Final version of IA	LMO			
Mon 20th Feb 2023	TOK: FINAL DEADLINE - upload essay and final reflection to managabac	PAR & APR			
Mon 27th Feb 2023	Design HL and SL: IA final vesrion due	SNE			
Mon 27th Feb 2023	French ab initio orals + French B Orals SL (2nd part) + HL due + French A Written Assessment due	SBE + VFO + RBU + SLO			
Wed 1st March 2023	Film Portfolio Final Draft & Visual Arts comparative study submission	JBR / SMU			
Mon 15th March 2023	Visual arts exhibition & Comparative Study submission deadline	SMU			
Mon 27th March 2023	Visual arts process portfolio	SMU			
Fri 7th Apr - Fri 21st Apr 2023			Spring Break		
Fri 28th Apr - Fri 19th May 2023	DP2 Final Exams	APR			
Thursday 6th July 2023	DP Results Day	APR			

# TIMELINE FOR CURRENT YEAR 11 COHORT



EVENT	DATE
Year 11 DP Options Evening	Tuesday 15 <sup>th</sup> February 2022
Year 11 DP Options Selection Opens	Friday 18 <sup>th</sup> February 2022
Year 11 Pupil DP Options Fair	Friday 4 <sup>th</sup> March 2022 (period 6 & 7)
Deadline for Options form completion	Friday 15 <sup>th</sup> March 2022
Final DP options confirmed	End of April 2022

Thank you for joining us.



LA CÔTE  
INTERNATIONAL SCHOOL  
AUBONNE

A NORD ANGLIA EDUCATION SCHOOL

