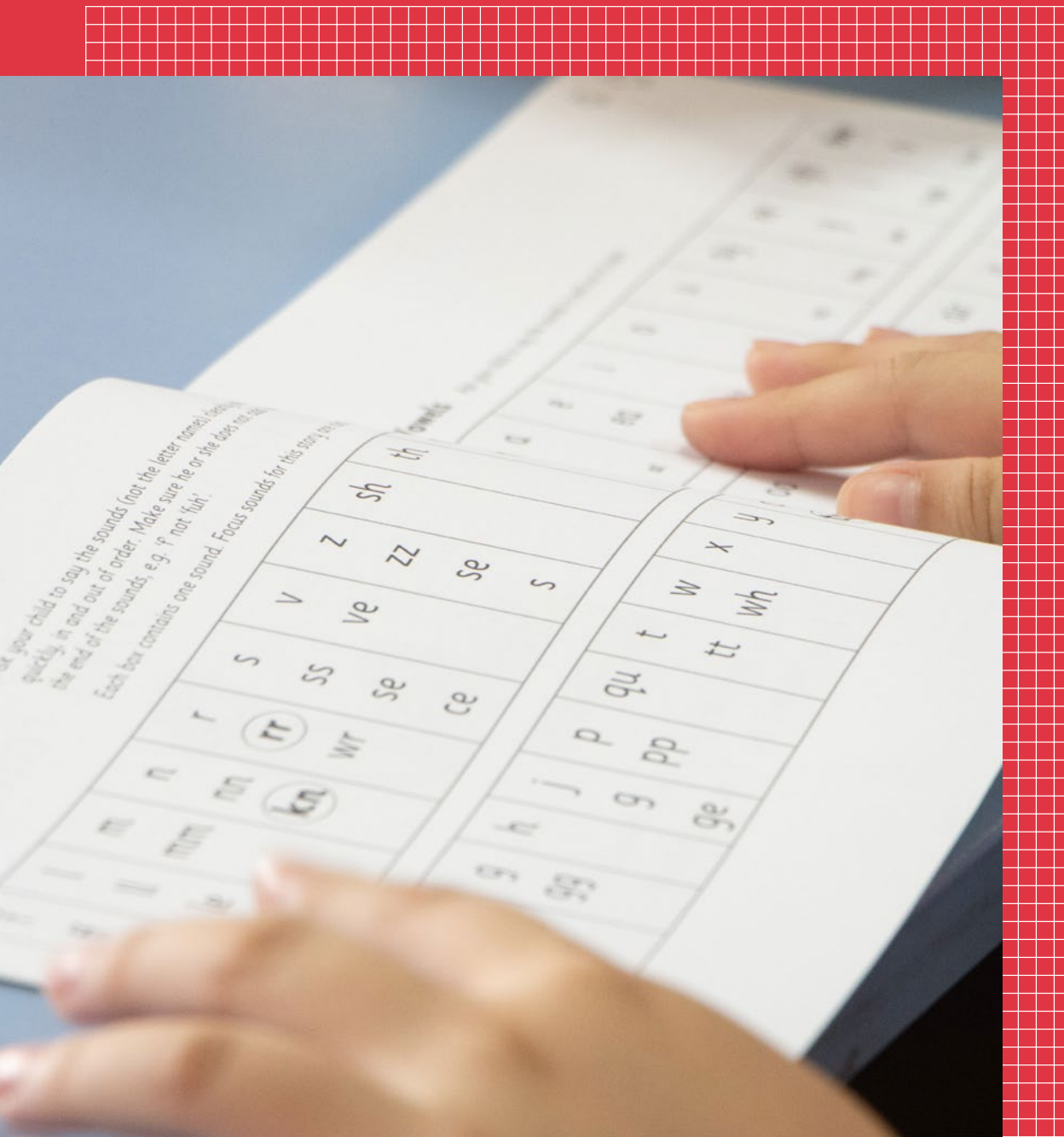




BRITISH INTERNATIONAL SCHOOL
HO CHI MINH CITY
A NORD ANGLIA EDUCATION SCHOOL

PRIMARY LEARNING SUPPORT (LS) DEPARTMENT

2023-2024

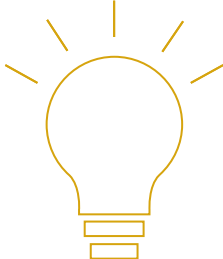


PRIMARY LEARNING SUPPORT

Our Primary Learning Support Department works with children across both EY&I and Junior campuses. We work in partnership with parents and class teachers to promote successful learning opportunities.

COMMUNICATION

It's important to share information between class teachers, parents, external professionals and the LS team. Together we can ensure a cohesive programme to meet individual needs.





HOW WE SUPPORT CHILDREN

In-class Support

- Providing suggestions for differentiation
- Breaking tasks into manageable steps
- Providing strategies and advice

Withdrawal

- Building self esteem
- Building Learning Power
- Developing strategies for learning and learner behaviour
- Teaching and strengthening basic skills
- Focusing on individual targets

HOW YOU CAN SUPPORT YOUR CHILD'S LEARNING?

- Be consistent with strategies and methods used
- Know your child's limitations – play is important; allowing brains to recharge and develop social skills
- Share books with and read to your child
- Be active and involved in your child's day
- Have a regular bedtime for your child
- Maintain communication with teachers
- Share external assessment information with us

If you have any questions, our doors are always open. Please email or drop in.

THE LEARNING SUPPORT TEAM



Ms Sarah
Head of Learning Support



Ms Stephanie
Assistant Learning Support Leader



Ms Hazel
Learning Support Teacher



Ms Nici
Learning Support Teacher



Ms Clare
Learning Support Teacher



Ms Jade
Whole School Speech and
Language Therapist



Ms Tram
Learning Support TA



Ms Tu
Learning Support TA



Ms Ha
Learning Support TA



Ms Phuong
Learning Support TA



Ms Duyen
Learning Support TA



Ms Bach
Learning Support TA



Percy
Wellbeing Support Dog